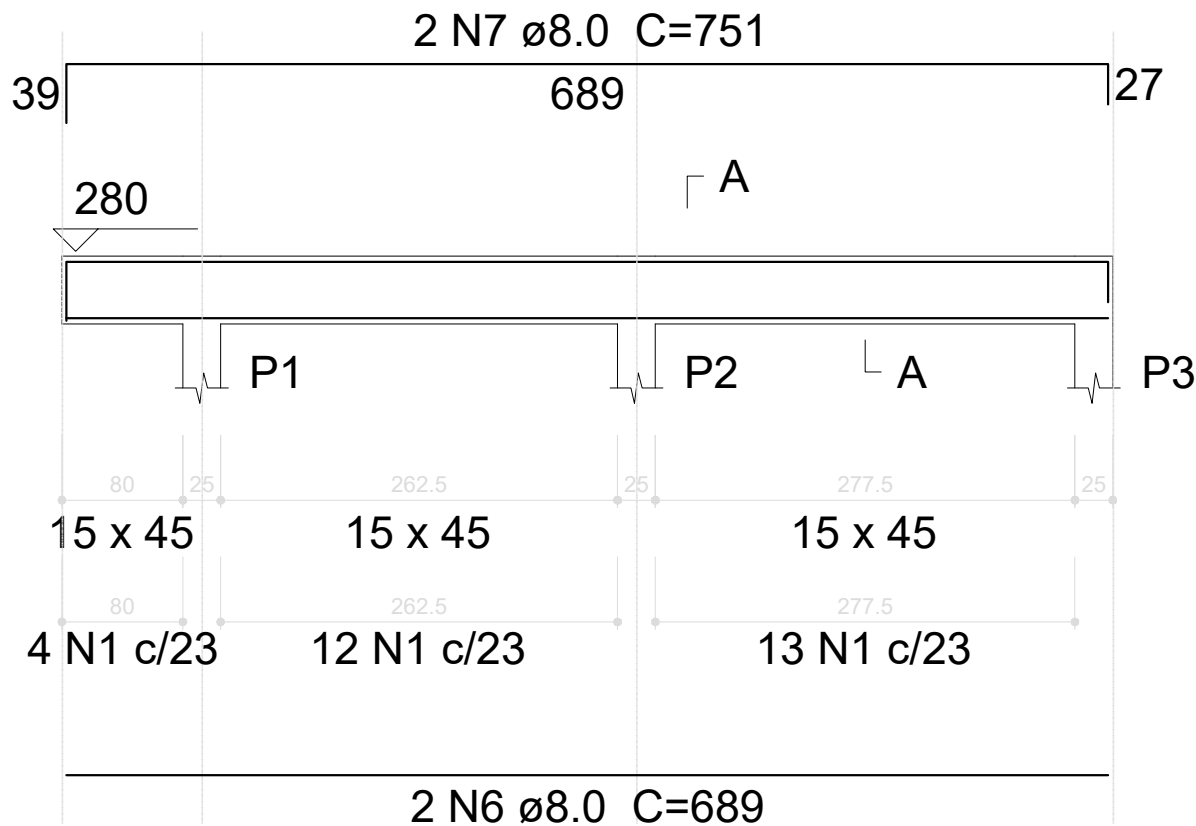


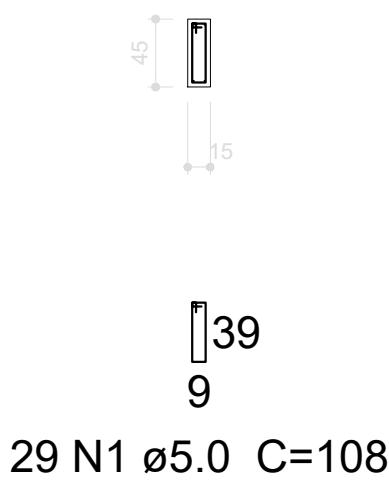
V1

ESC 1:50



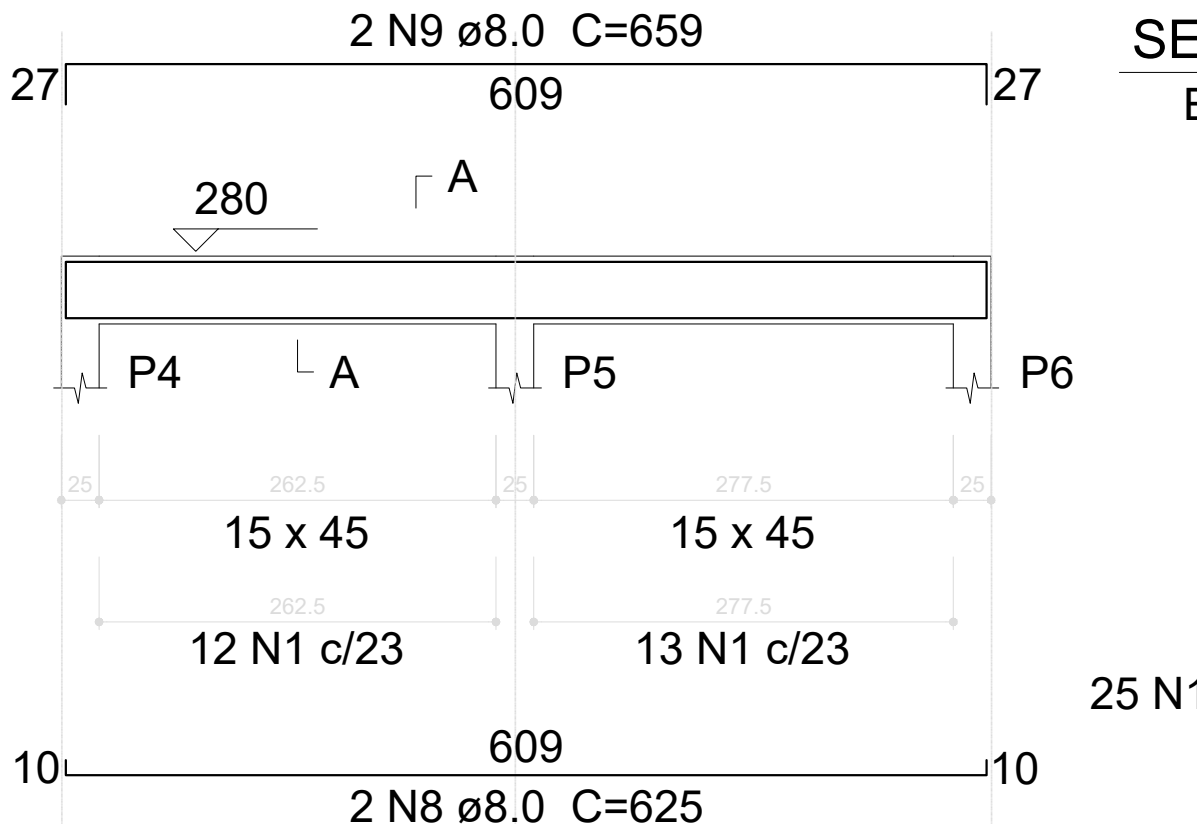
SEÇÃO A-A

ESC 1:50



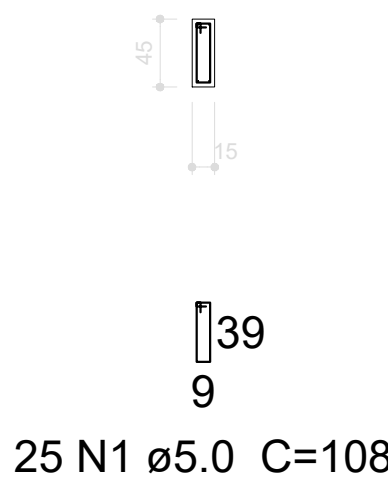
V2

ESC 1:50



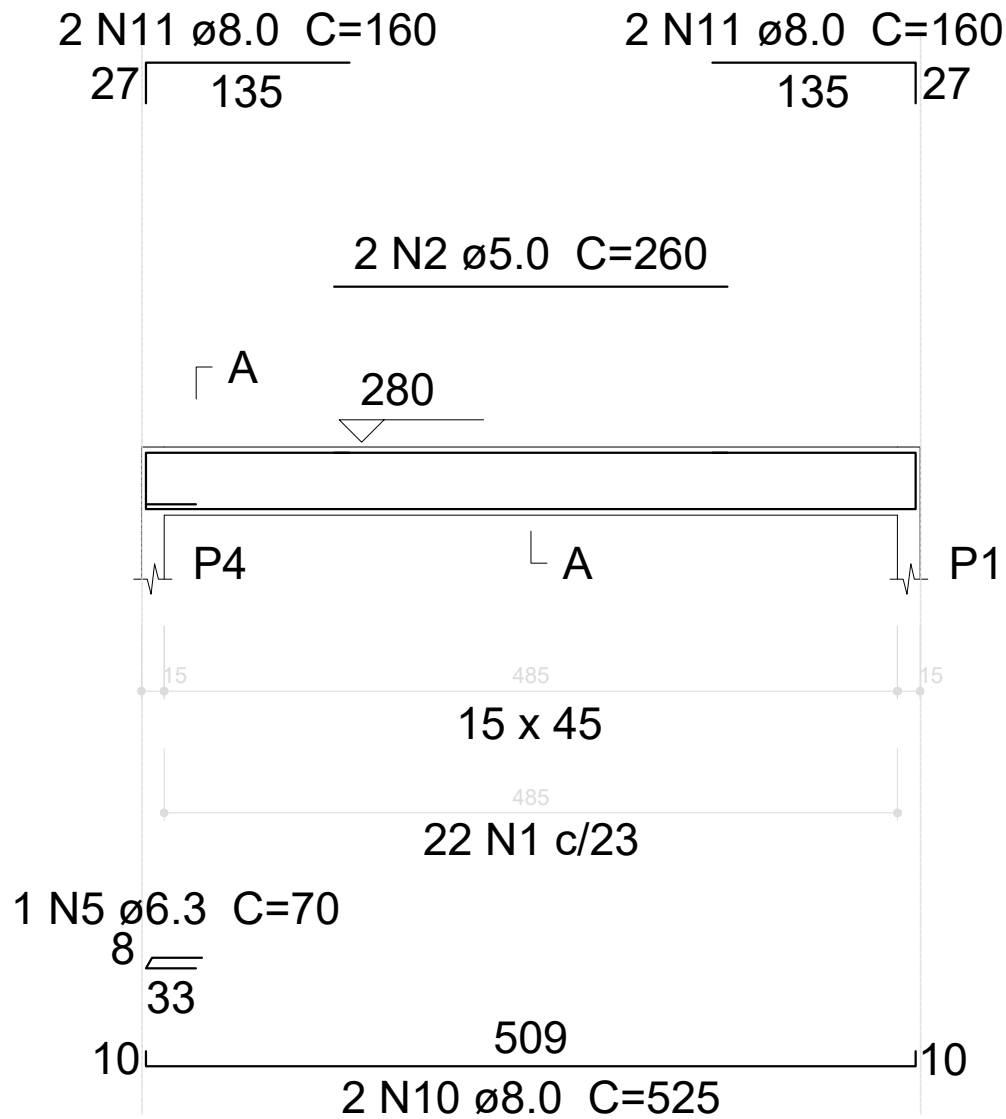
SEÇÃO A-A

ESC 1:50



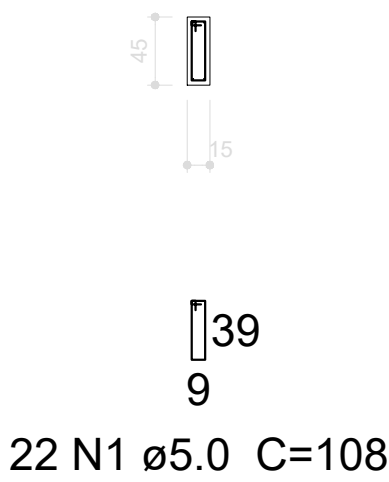
V3

ESC 1:50



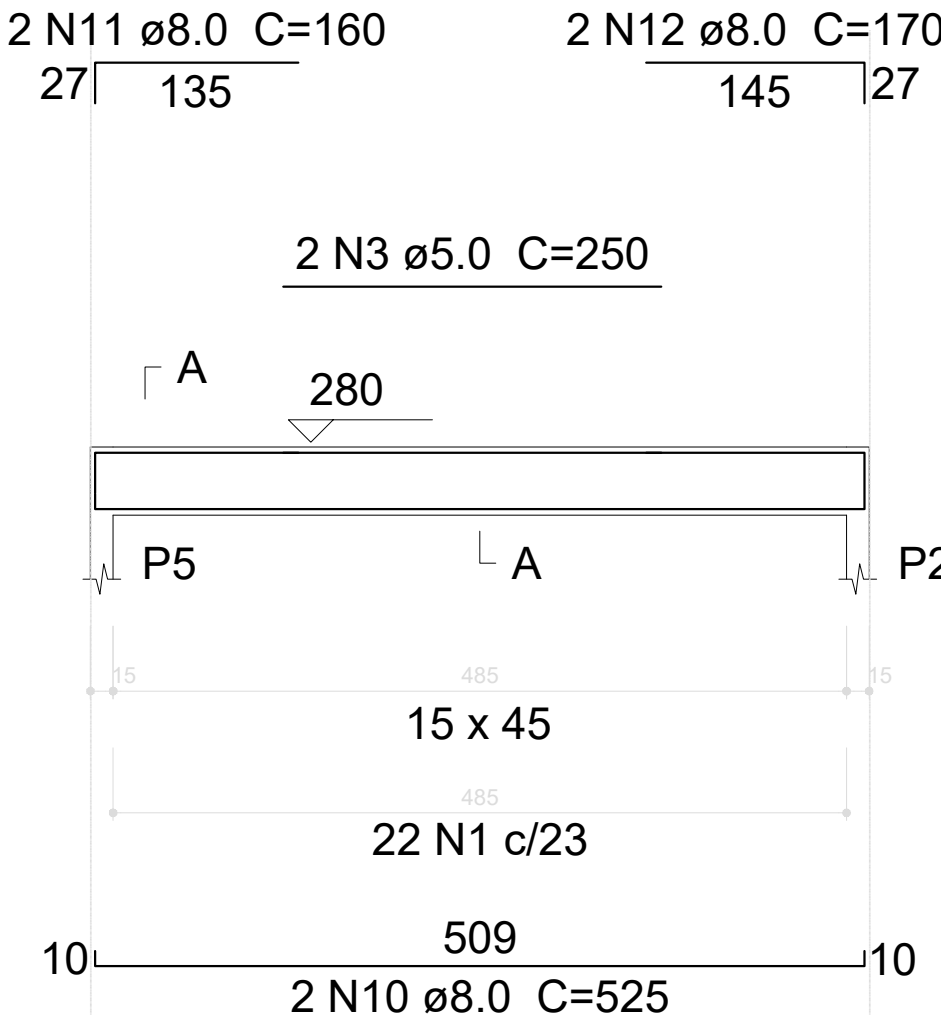
SEÇÃO A-A

ESC 1:50



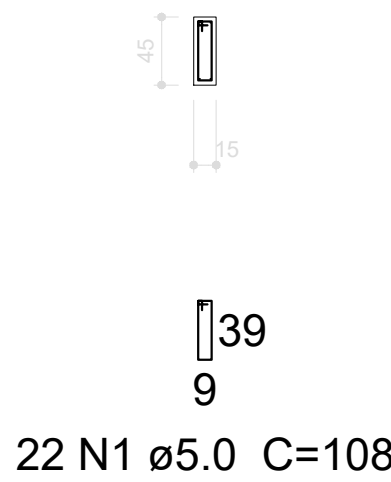
V4

ESC 1:50



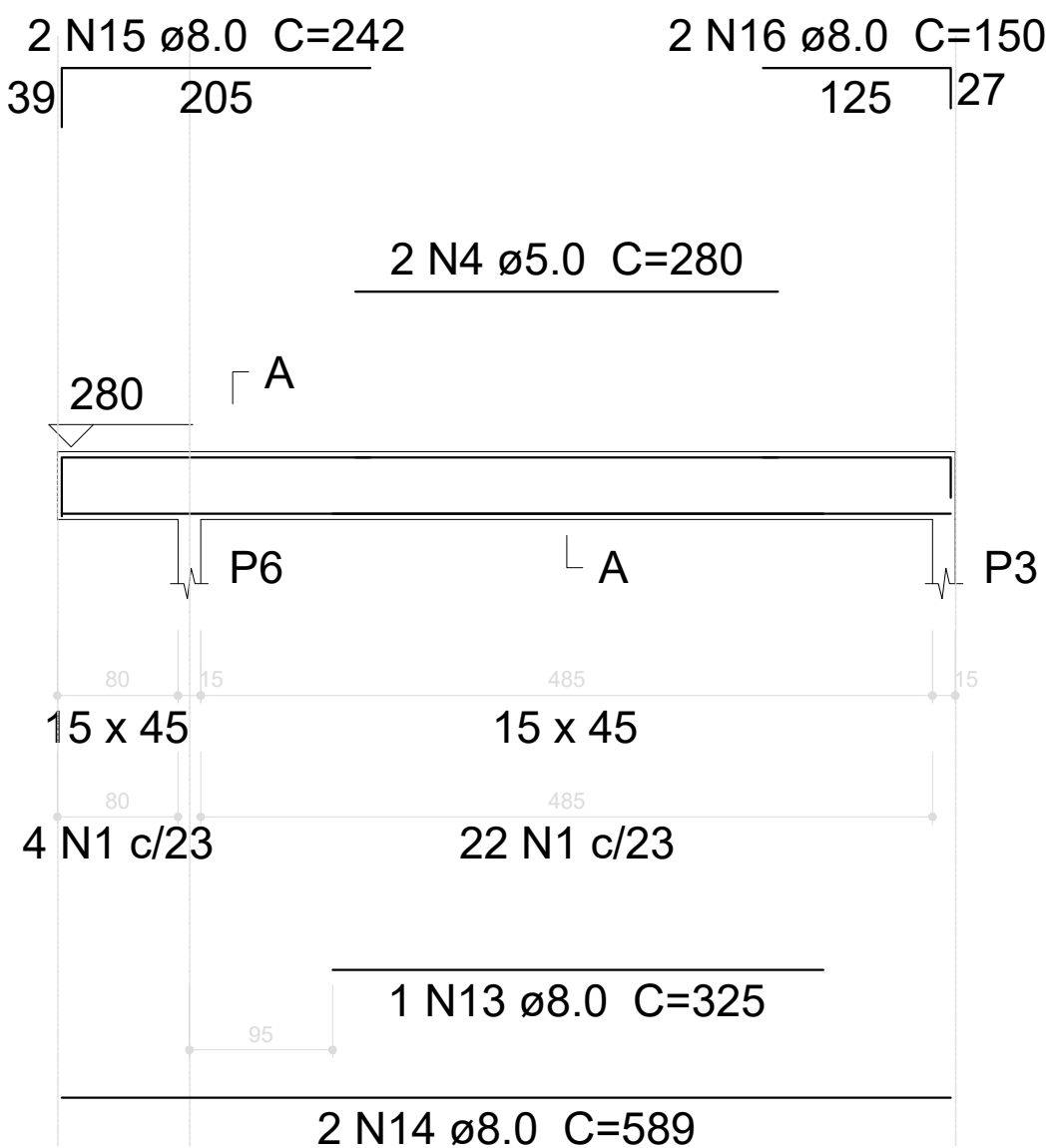
SEÇÃO A-A

ESC 1:50



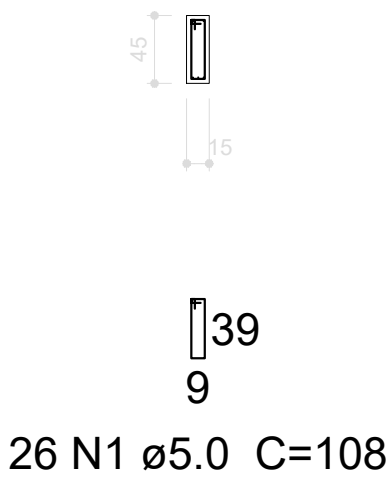
V5

ESC 1:50



SEÇÃO A-A

ESC 1:50



Relação do aço

V1		V2		V3	
V4		V5			
AÇO	N	DIAM (mm)	QUANT (Barras)	UNIT (cm)	C.TOTAL (cm)
CA60	1	5.0	124	108	13392
	2	5.0	2	260	520
	3	5.0	2	250	500
	4	5.0	2	280	560
CA50	5	6.3	1	70	70
	6	8.0	2	689	1378
	7	8.0	2	751	1502
	8	8.0	2	625	1250
	9	8.0	2	659	1318
	10	8.0	4	525	2100
	11	8.0	6	160	960
	12	8.0	2	170	340
	13	8.0	1	325	325
	14	8.0	2	589	1178
	15	8.0	2	242	484
	16	8.0	2	150	300

Resumo do aço

AÇO	DIAM (mm)	C.TOTAL (m)	PESO + 10 % (kg)
CA50	6.3	0.7	0.2
	8.0	111.4	48.3
CA60	5.0	149.8	25.4
PESO TOTAL (kg)			
CA50	48.5		
CA60	25.4		

Volume de concreto (C-30) = 1.98 m³
Área de forma = 30.82 m²



Estado de Santa Catarina
Prefeitura Municipal de Luiz Alves

Data
Março/2024
Escala
Indicada
Arquivo

Projeto
Ampliação e Adequação na Sede do
Corpo de Bombeiros de Luiz Alves
Local
Av Ver. José Augusto Köhler, 185
Vila do Salto - Luiz Alves/SC

Conteúdo da folha
Vigas Superiores

Desenho
Alexandre
ART
Folha
06/08

Prefeitura Municipal
Marcos Pedro Veber
Prefeito Municipal

Projeto
Alexandre Bueno de Lacerda
Engº Civil - CREA SC 181484-9