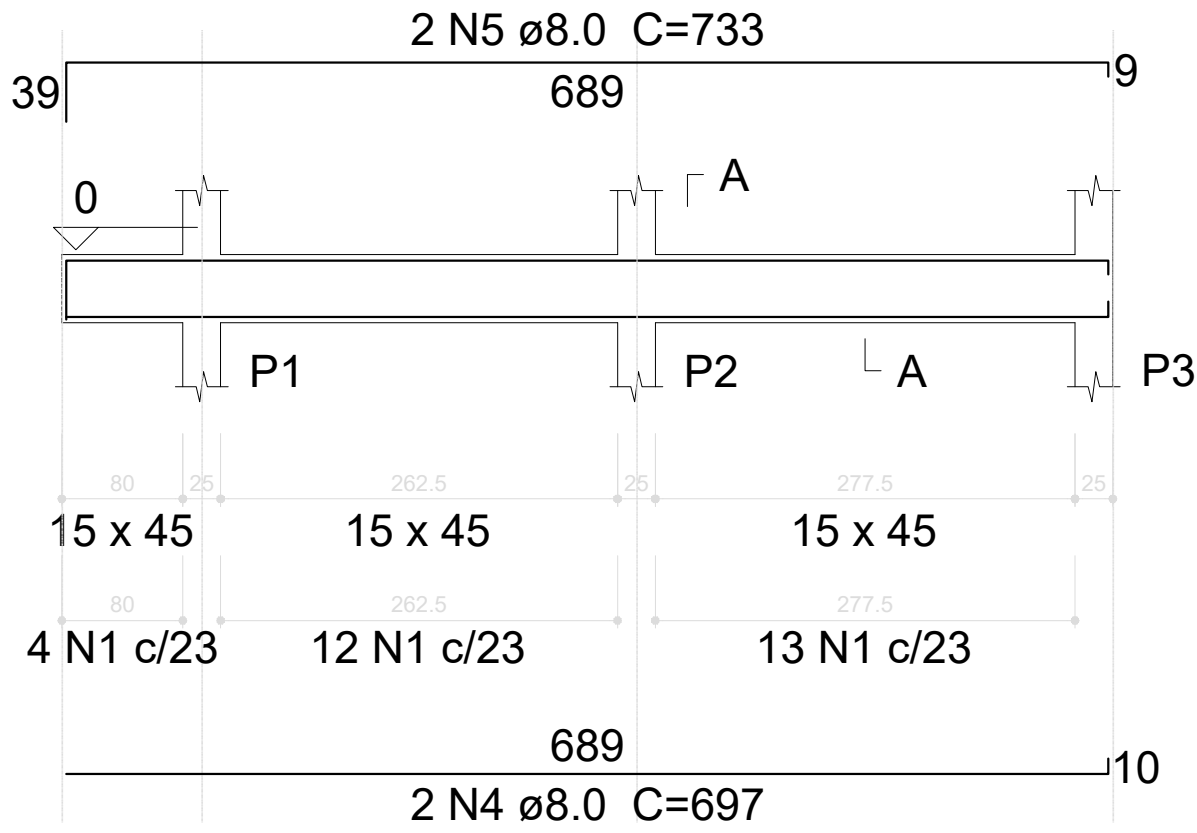


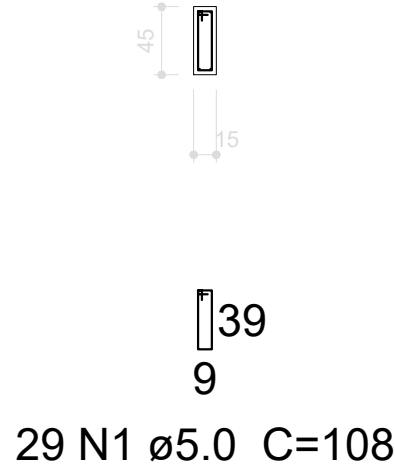
V1

ESC 1:50



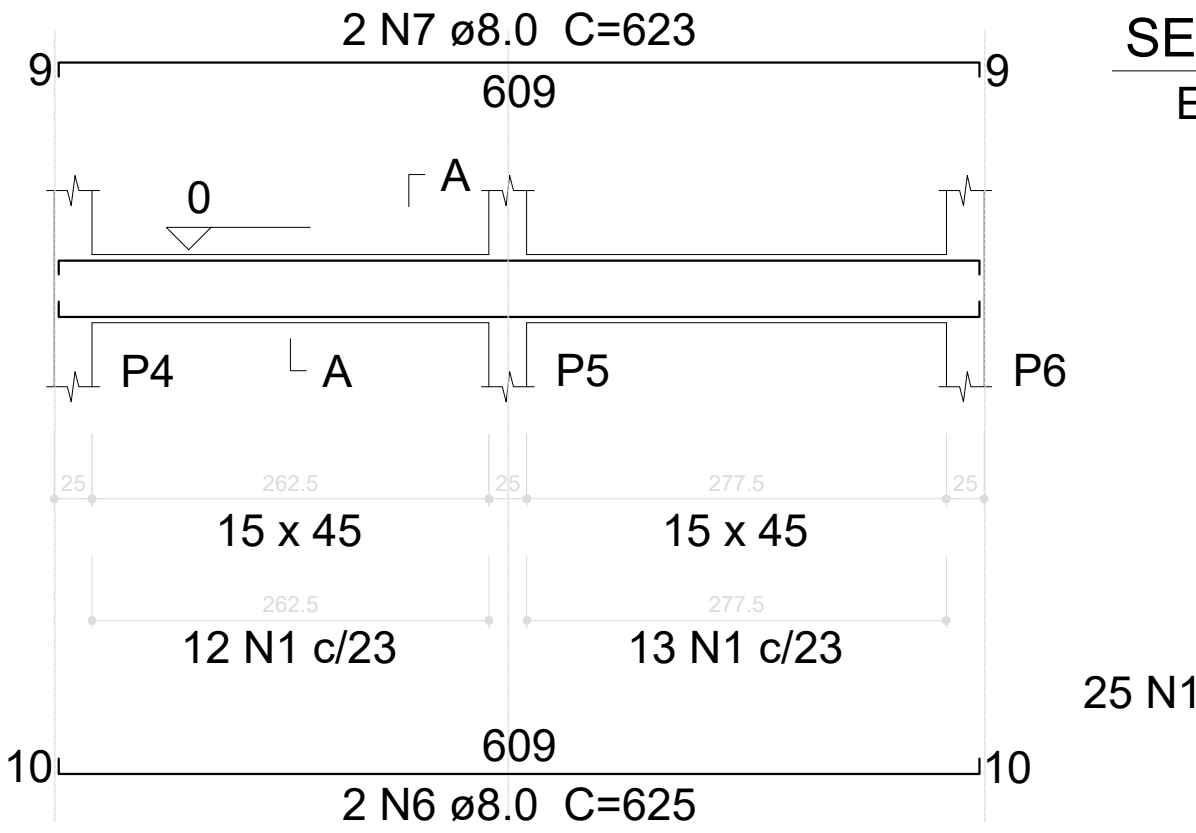
SEÇÃO A-A

ESC 1:50



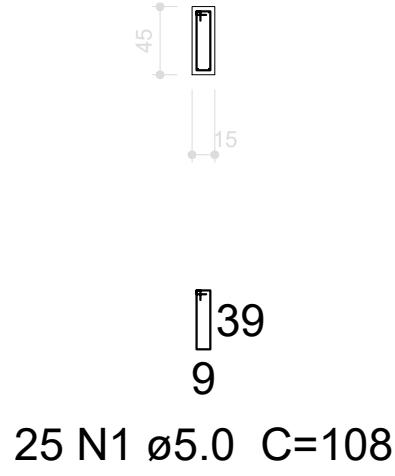
V2

ESC 1:50



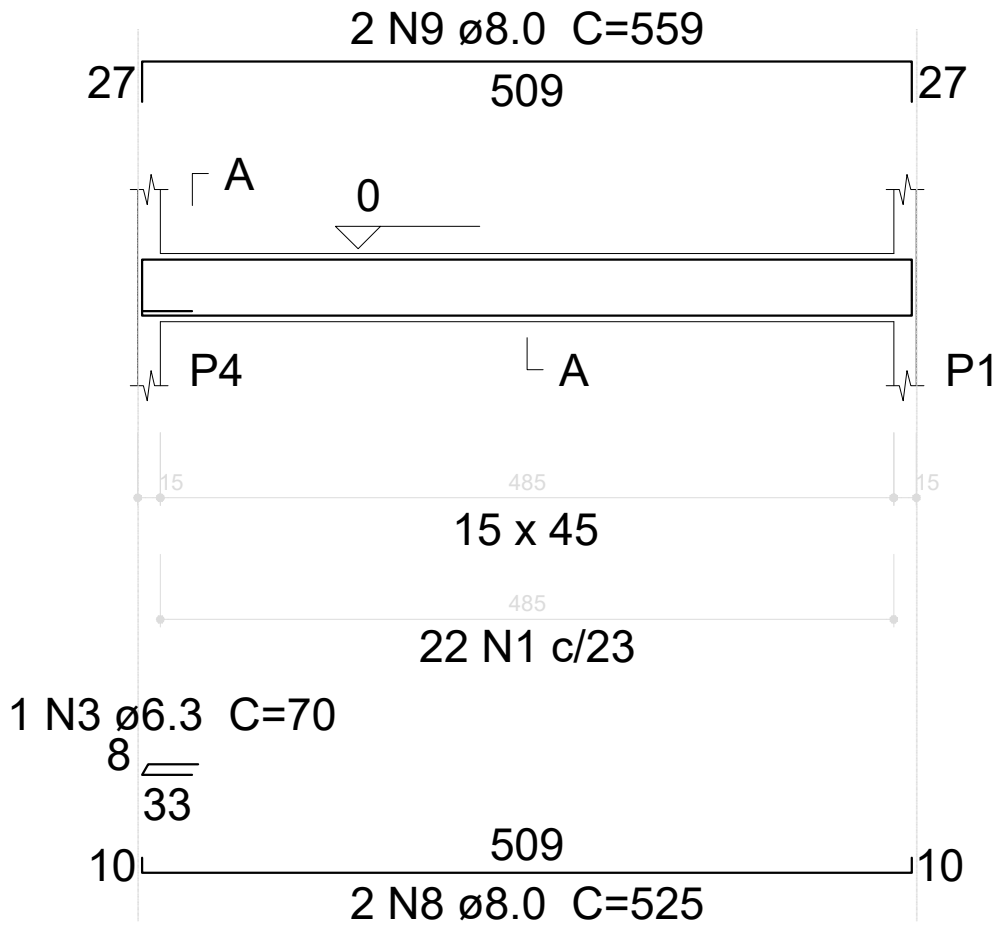
SEÇÃO A-A

ESC 1:50



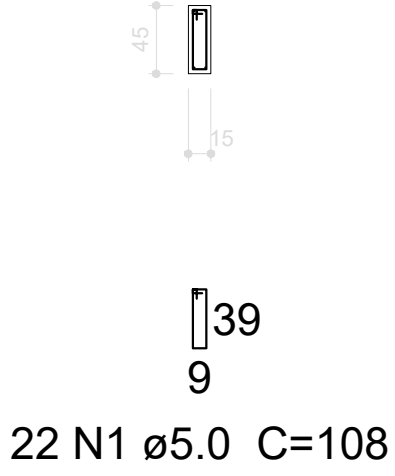
V3

ESC 1:50



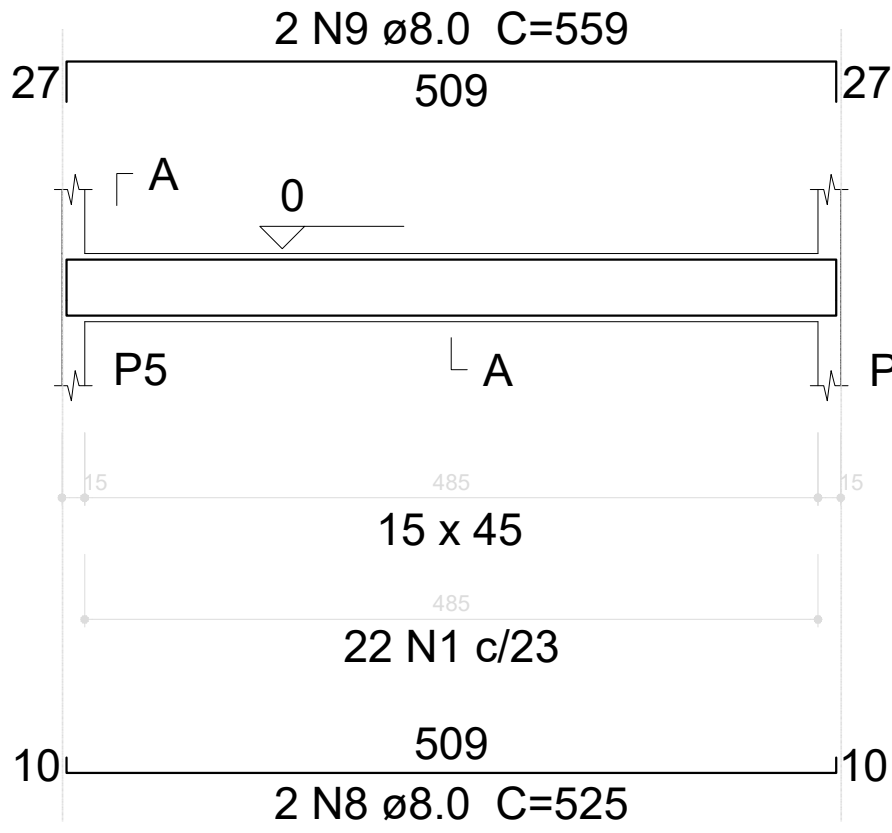
SEÇÃO A-A

ESC 1:50



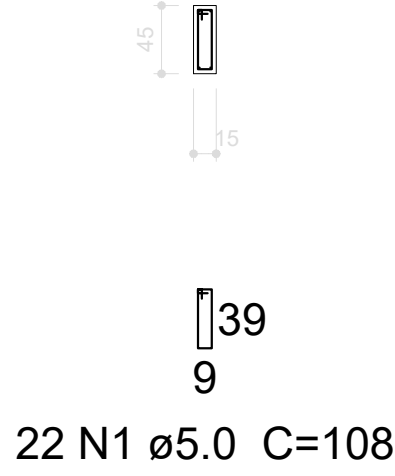
V4

ESC 1:50



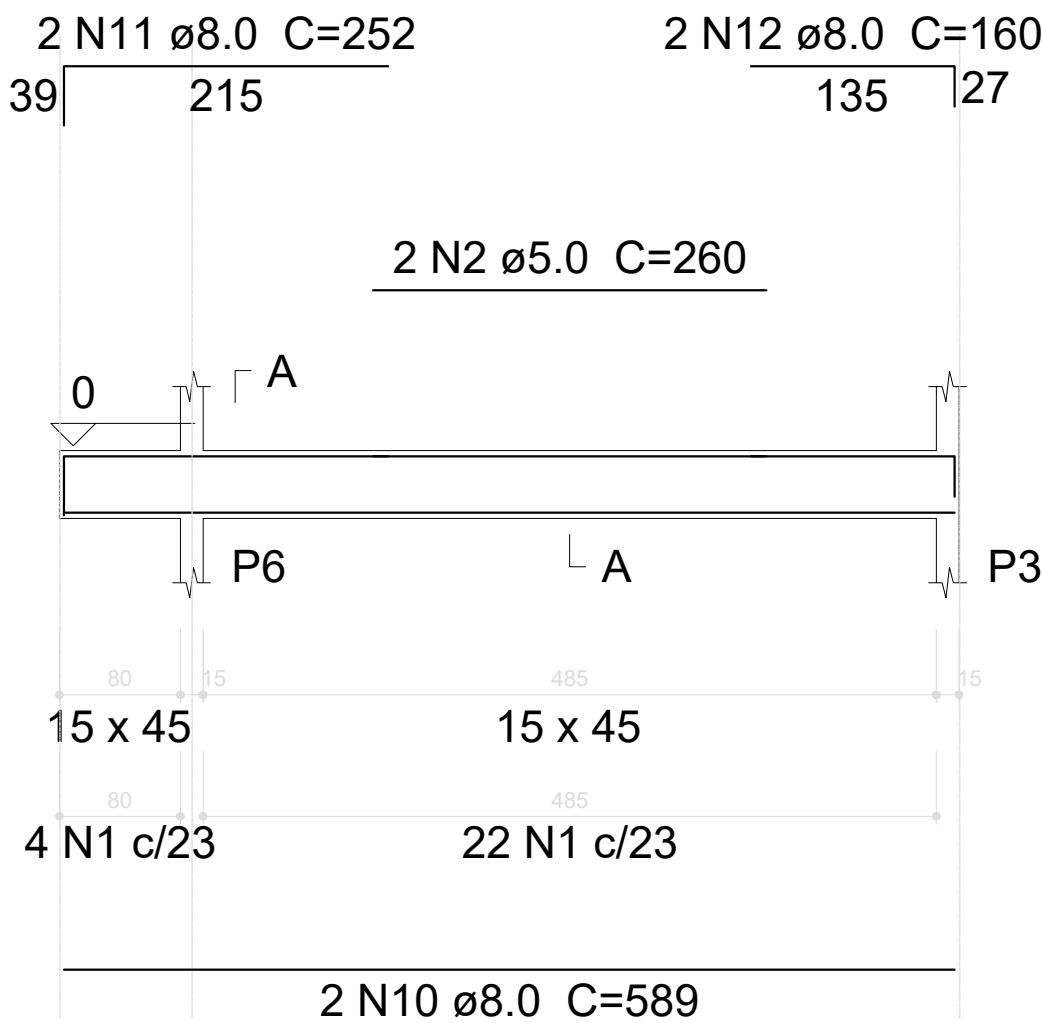
SEÇÃO A-A

ESC 1:50



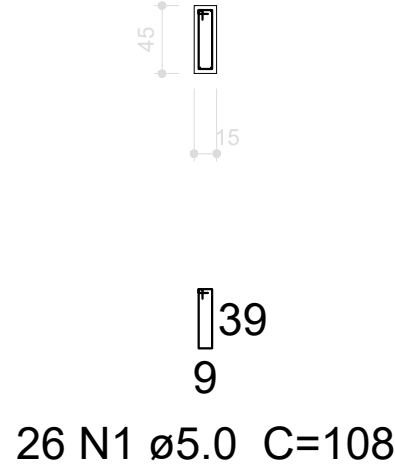
V5

ESC 1:50



SEÇÃO A-A

ESC 1:50



Relação do aço

V1 V4	N	DIAM (mm)	QUANT (Barras)	UNIT (cm)	C.TOTAL (cm)
CA60	1	5.0	124	108	13392
	2	5.0	2	260	520
CA50	3	6.3	1	70	70
	4	8.0	2	697	1394
	5	8.0	2	733	1466
	6	8.0	2	625	1250
	7	8.0	2	623	1246
	8	8.0	4	525	2100
	9	8.0	4	559	2236
	10	8.0	2	589	1178
	11	8.0	2	252	504
	12	8.0	2	160	320

Resumo do aço

AÇO	DIAM (mm)	C.TOTAL (m)	PESO + 10 % (kg)
CA50	6.3	0.7	0.2
CA60	8.0	117	50.8
PESO TOTAL (kg)			
CA50	50.9		
CA60	23.6		

Volume de concreto (C-30) = 1.98 m³
Área de forma = 30.82 m²



Estado de Santa Catarina
Prefeitura Municipal de Luiz Alves

Data
Março/2024
Escala
Indicada
Arquivo

Projeto
Ampliação e Adequação na Sede do
Corpo de Bombeiros de Luiz Alves
Local
Av Ver. José Augusto Köhler, 185
Vila do Salto - Luiz Alves/SC

Conteúdo da folha
Vigas Baldrame

Desenho
Alexandre
ART
Folha
05/08

Prefeitura Municipal
Marcos Pedro Veber
Prefeito Municipal

Projeto
Alexandre Bueno de Lacerda
Engº Civil - CREA SC 181484-9